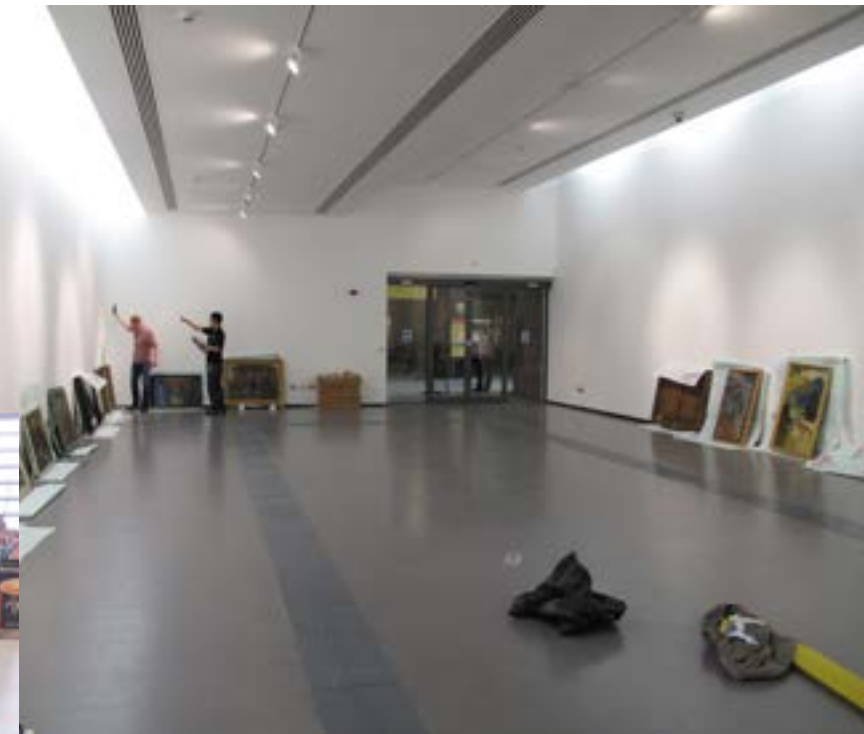




# Portfolio

Efstathios Professional Services

# Exhibitions



- Permanent & Temporary
- Open display or showcases
- Object Installation/Removal
- 2D & 3D collections



# Documentation



Side A

Front Side

End Side

Side B

3rd comp.(A3)

2nd comp.(A2)

1st comp.(A1)

boot(A4)

Side A Elevation

boot(Bb)

1st comp.(B1)

2nd comp.(B2)

3rd comp.(B3)

Side B Elevation

Front Side Elevation(F)

End Side Elevation (E)

**NRM**  
NATIONAL  
RAILWAY  
MUSEUM

NOTES  
supporting documentation:  
CONS\_1983-7001\_(0001)\_Overall\_Condition\_Survey.xls

PROJECT TITLE  
LOAN:  
Royal Class Exhibition,  
Spoorwegmuseum, Utrecht

DRAWN BY  
STATHIS TSOLIS  
CONSERVATOR (NRM)

OBJECT ID  
1983-7001

DRAWING TITLE  
CONS\_1983-7001\_(0004)\_exterior\_condition\_survey

SCALE  
NOT TO SCALE

DATE  
APRIL 2010

C1

C2

C3

R1

C1

M1

1st compartment

R1

C2

M1

2nd compartment

R1

C3

M1

3rd compartment

Side A

Side B

**NRM**  
NATIONAL  
RAILWAY  
MUSEUM

NOTES  
supporting documentation:  
CONS\_1983-7001\_(0001)\_Overall\_Condition\_Survey.xls

PROJECT TITLE  
LOAN:  
Royal Class Exhibition,  
Spoorwegmuseum, Utrecht

DRAWN BY  
STATHIS TSOLIS  
CONSERVATOR (NRM)

OBJECT ID  
1983-7001

DRAWING TITLE  
CONS\_1983-7001\_(0001)\_Interior\_Condition\_Survey

SCALE  
NOT TO SCALE

DATE  
APRIL 2010

T-type Key

saloon key

handles and steps

unlock anti-clockwise

unlock clockwise

1st comp.(B1)

2nd comp.(B2)

3rd comp.(B3)

Side B Elevation

**NRM**  
NATIONAL  
RAILWAY  
MUSEUM

NOTES  
Use gloves and overshoes at all times  
Access from Side B Only  
1st Compartment, A Side, door is latched from inside. Do not force to open  
Avoid climbing on the stepboards or the steps.  
Maximum weight on steps not to exceed 70kg.  
Do not force handles

PROJECT TITLE  
LOAN:  
Royal Class Exhibition,  
Spoorwegmuseum, Utrecht

DRAWN BY  
STATHIS TSOLIS  
CONSERVATOR (NRM)

OBJECT ID  
1983-7001

DRAWING TITLE  
CONS\_1983-7001\_(0002)\_Access

SCALE  
NOT TO SCALE

DATE  
1 APRIL 2010

Contents:

1. 1x spray bottle

2. 1x WYPALL Wipers Roll 7288 Large

3. 2x rolls gaffa tape

4. 2X access keys

5. 9x Round bulbs 25W250V45mm

6. 1x UK to EU adapter

7. 1x 60g Renaissance wax

8. 2x Microfibre Cloth

9. 1x Chamois leather cloth

10. 4x pair overshoes

11. 2x pair cotton gloves

12. 2x DO NOT CLIMB labels with cable ties

13. 1x 100ml NOH2O Waterless polishing system

14. 1x 100ml Synerponic A7

1

2

3

4

5

6

7

8

9

10

11

12

13

14

Information

1983-7001

NRM - Locomotives and Rolling Stock

Queen Adelaide's Saloon, NO. 2

Media

Links

Activities (8)

Authorities (5)

Other (1)

Object Number: 1983-7001

Hazard

Collection: NRM - Locomotives and Rolling Stock

Object Name: railway carriage

Title: Queen Adelaide's Saloon, NO. 2

Maker: London & Birmingham Railway

Materials

Measurements: Length over buffers: 21' 8", Width of body: 5' 8", Width over st

Condition: 3 - Good

Condition Date: 2010-04-05

Current Record: ☒

Examined By: Thavis, (Stathis)

Purpose: loan out

Component/Accessory: whole

Linked Media

Damage Categories

Condition Description: The interior is in fair condition and upholstery is w  
The roof is in good condition with cracks on the p  
The famous name is tarnished but in stable cond  
This item and needs to be another than this next NRM

Monitor? ☐

Working Object ☐

Ongoing Maintenance ☐

Conservation Scheduled ☐

Conserv. Request Date

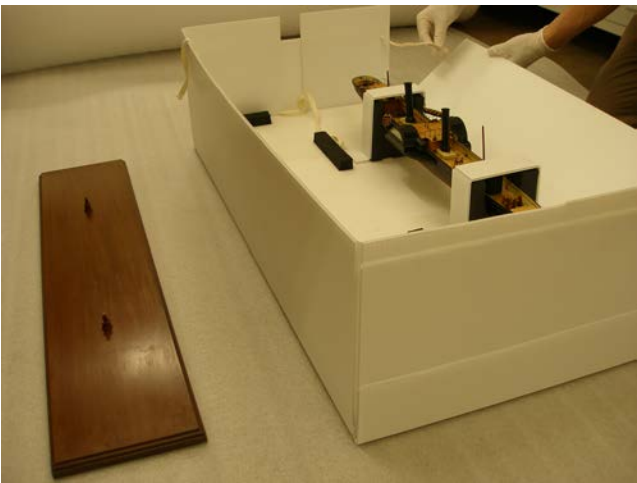
Note: A detailed condition survey of the interior and the

Effective utilisation of museum database in conjunction with design software to create condition records tailored to individual objects.

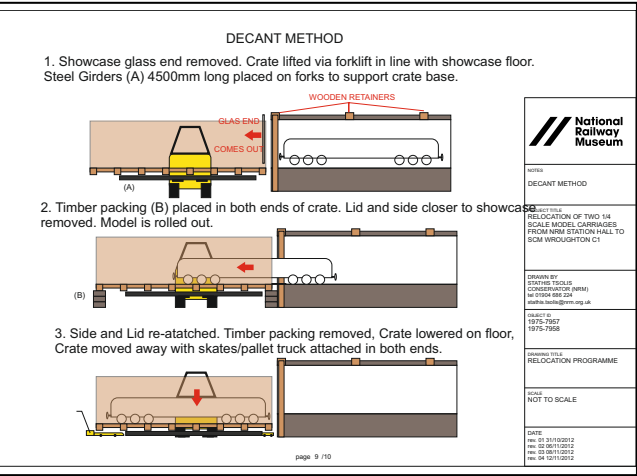
Efstathios Tsolis / Beverley / UK/ tel : 07726419551 / email [tsolis@efstathios.co.uk](mailto:tsolis@efstathios.co.uk) / web:



# Collections Logistics



1927-817 model of cross channel paddle steamer. Science Museum London. Loan inside the UK. Example of low cost packing method.



Relocation of 1/4 scale model carriages (750kg), NRM,York, Extremely Delicate yet sizeable object, move required careful planning, carried out in-house



Transportation of Queen Adelaide's carriage (built 1842) for a temporary Exhibition in Utrecht Holland.



# Hazards Management



## Mildew removal



Provision of training to staff and conservation students, installation of quarantine areas and removal of mildew spores using HEPA suction equipment.

## Firearms Training



co-authored and presented firearms awareness training to ScM group Conservation and CCI staff, May 2013.

## Asbestos non-licensable remediation



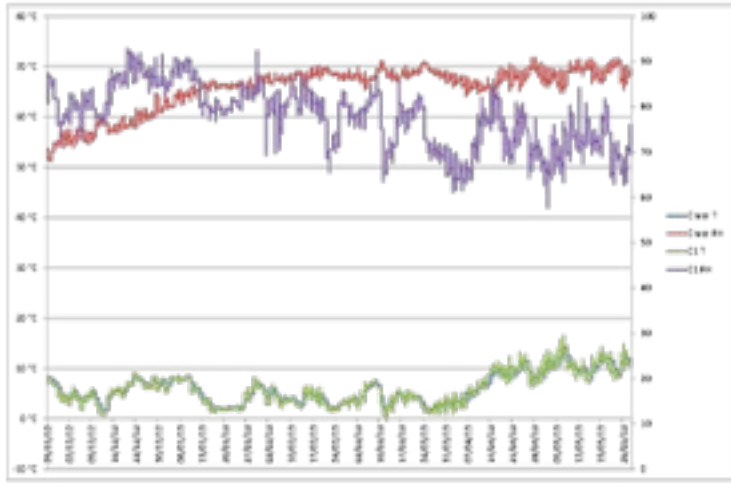
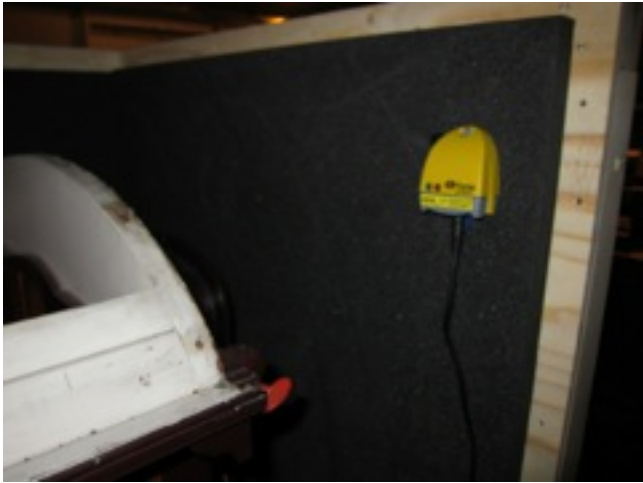
ACM gasket removal from Locomotive chimney to allow road transportation under low bridge. non Licensable work carried out by in house staff.



# Preventive Conservation

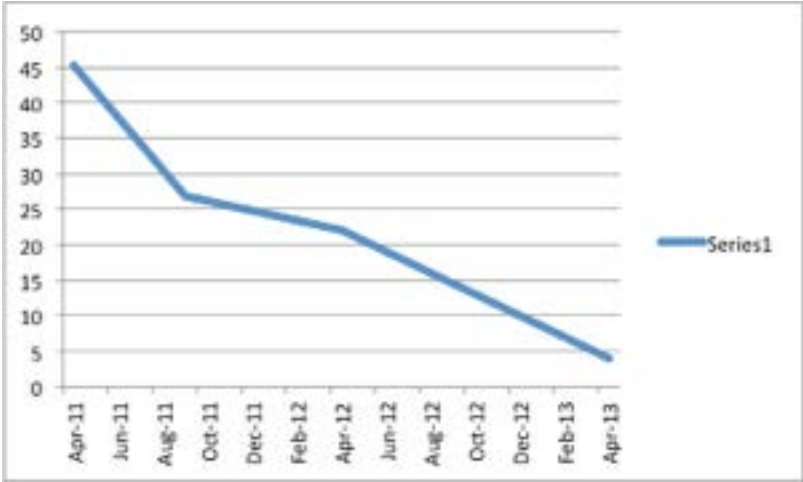


## Environmental Monitoring



Object in Transit: buffering with silica gel, tyvek wrapping and internal logger with attached usb cable to extract data at end destination.

## Integrated Pest Management



Implementation of bi-annual IPM programme across two sites with significant reduction of pest populations within 2 years



# Object Treatments



1927-817 model of cross channel paddle steamer. Science Museum London. surface cleaning, Replication of missing components.



2013-7130/34 Child's Wagon Lits Set. Pest Removal, Cleaning, Cosmetic Retouch, Display.



Model Locomotive, 1/24, BR class 83 2 Bo-Bo. NRM York. Surface cleaning, Pantograph Reconstruction, Replication of missing parts.